

THE THOUSAND ISLANDS PARKWAY

DEPOSITED PLAN No. 577

CAUTION - THIS PLAN IS NOT A PLAN OF SUBDIVISION WITHIN THE MEANING OF SECTION 29, 32 OR 33 OF THE PLANNING ACT

RECEIVED AND DEPOSITED AS

PLAN 28R-2764

DATE: October 3rd, 1978.

REGISTRAR FOR THE REGISTRY DIVISION OF LEADS (No. 28)

I REQUIRE THIS PLAN TO BE DEPOSITED UNDER PART II OF THE REGISTRY ACT

DATE 2nd OCTOBER, 1978.

A.J. Flatman
A.J. FLATMAN,
ONTARIO LAND SURVEYOR

MUNICIPAL TOWNSHIP OF THE FRONT OF ESCOTT

PLAN OF SURVEY
OF PART OF

LOT 23 AND LOT 24,
BROKEN FRONT CONCESSION
TOWNSHIP of ESCOTT
COUNTY of LEEDS

SCALE: 1 INCH = 60 FEET

1978

SURVEYOR'S CERTIFICATE

I HEREBY CERTIFY THAT:

- This survey and plan are correct and in accordance with The Surveys Act and The Registry Act and the regulations made thereunder.
- The survey was completed on the 18th day of August, 1978.

6th SEPTEMBER, 1978

A.J. Flatman
A.J. FLATMAN,
ONTARIO LAND SURVEYOR.

NOTE: BEARINGS SHOWN HEREON ARE ASTRONOMIC AND ARE REFERRED TO THE NORTH-WESTERLY LIMIT OF PART I, PLAN 28R-2417, ASSUMED TO BE NORTH 64°55' EAST AS SHOWN THEREON. ALL HANGING LINES HAVE BEEN VERIFIED.

BC, EC DENOTE BEGINNING AND END OF CURVE

WIT DENOTES WITNESS POINT SET BACK FROM CORNER

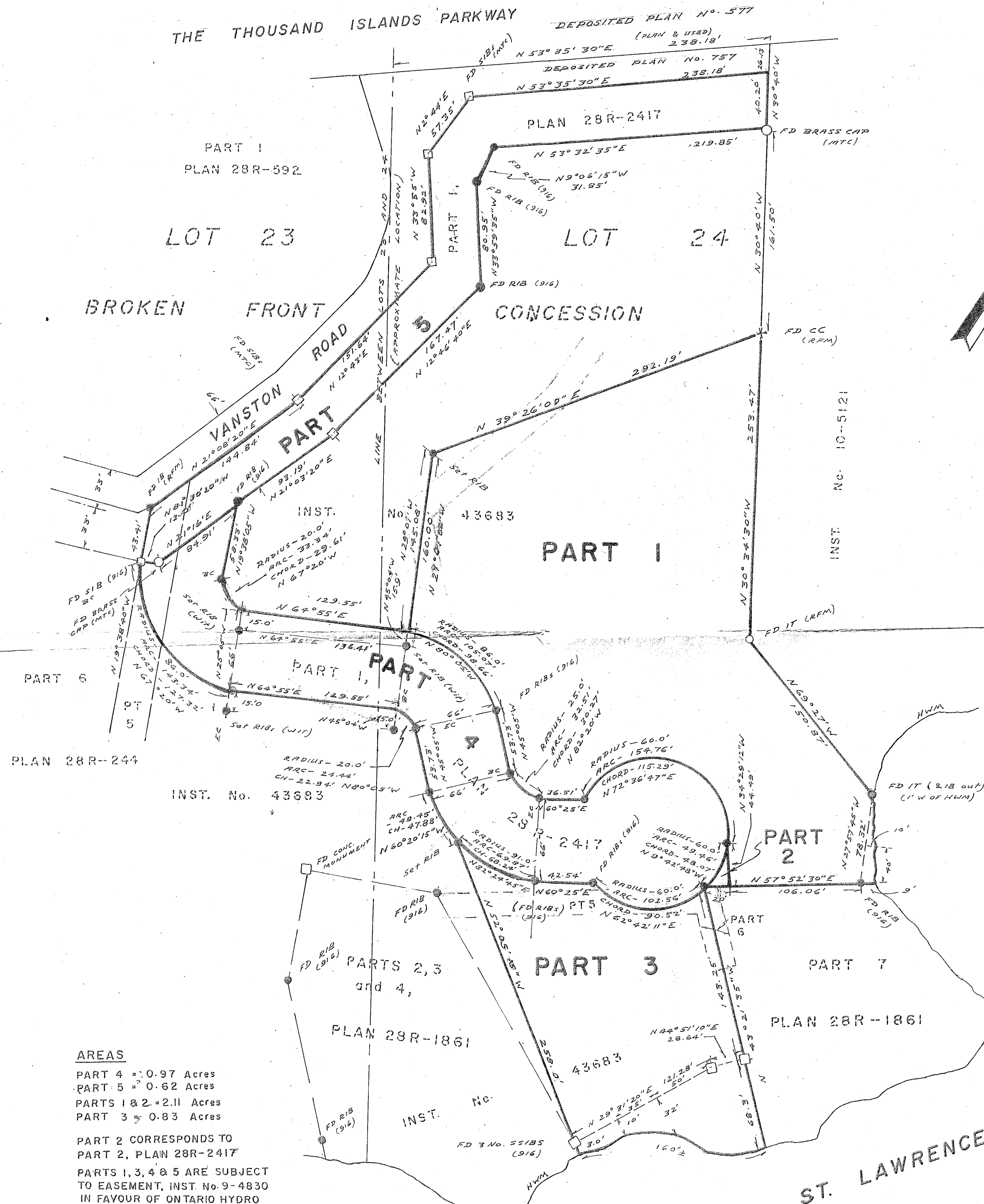
HIGH WATER MARK TIES ARE PERPENDICULAR TO TRAVERSE LINES UNLESS OTHERWISE INDICATED

- RIB DENOTES 3/4 INCH ROUND IRON BAR 2 FEET LONG WITH CAP
- SIB DENOTES 1 INCH SQUARE IRON BAR 4 FEET LONG
- SSIB DENOTES 1 INCH SQUARE IRON BAR 2 FEET LONG
- IB DENOTES 5/8 INCH SQUARE IRON BAR 2 FEET LONG
- FD DENOTES 'FOUND' DURING THE COURSE OF SURVEY
- *CC DENOTES CUT CROSS ON ROCK
- IT DENOTES IRON TUBE OR PIPE
- HWM DENOTES NORMAL ORDINARY HIGH WATER MARK

A. JAMES FLATMAN

ONTARIO LAND SURVEYOR
DOMINION LAND SURVEYOR
CONSULTING CIVIL ENGINEER

BOX 1674, PRESCOTT, ONTARIO.



AREAS

PART 4 = 0.97 Acres
PART 5 = 0.62 Acres
PARTS 1 & 2 = 2.11 Acres
PART 3 = 0.83 Acres

PART 2 CORRESPONDS TO
PART 2, PLAN 28R-2417

PARTS 1, 3, 4 & 5 ARE SUBJECT
TO EASEMENT, INST. No. 9-4830
IN FAVOUR OF ONTARIO HYDRO